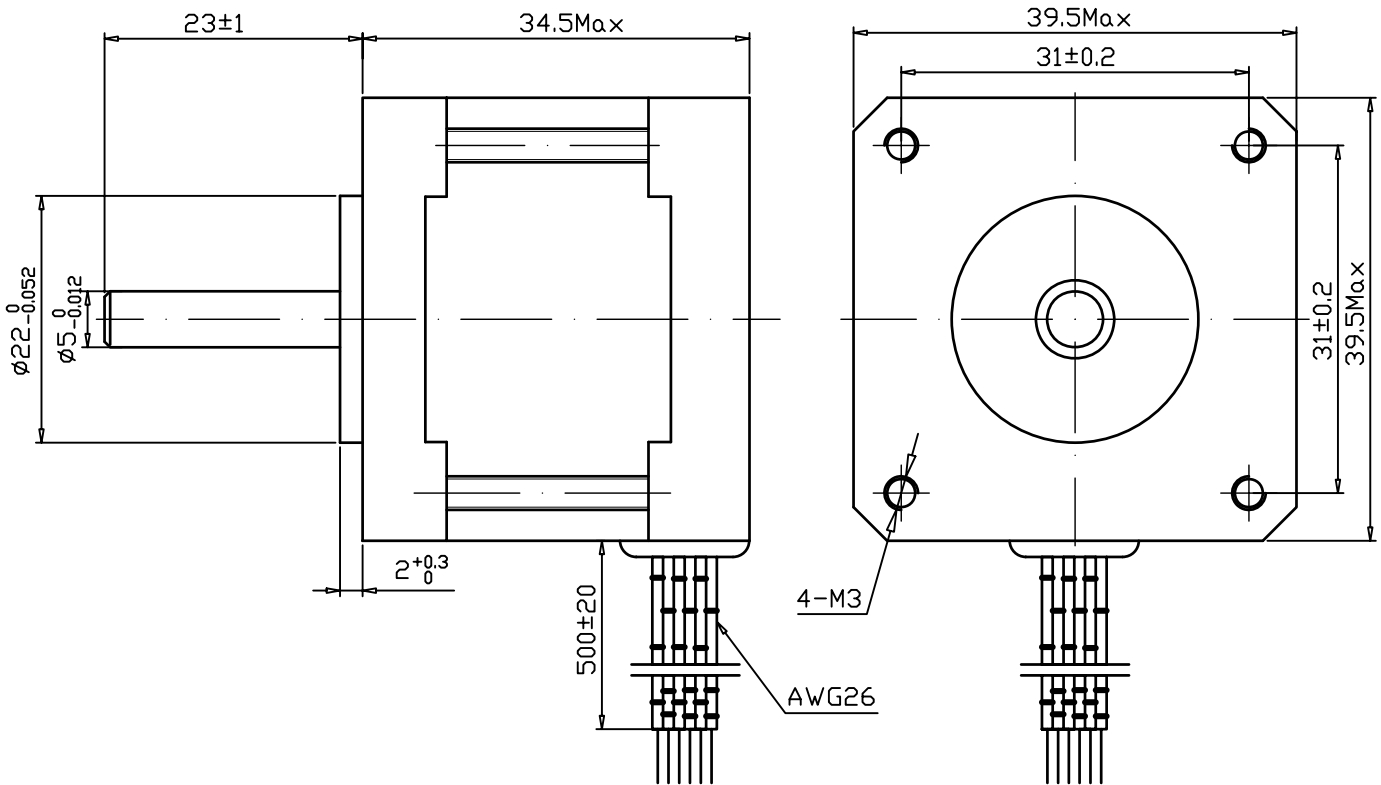


# STEPPING MOTORS TYPE 39BYG001

COMMON RATINGS		SPECIFICATIONS		Wiring Diagram 
STEP ANGLE	1.8°±5%	VOLTAGE	5V	
PHASES	2	CURRENT	1.0A	
INSULATION RESISTANCE	100mΩ<500DVC>	INDUCTANCE	5±20% <u>mH</u>	
CLASS OF INSULATION	B	RESISTANCE	5±10%Ω	
WEIGHT	0.16Kg	HOLDING TORQUE	1.8Kg.cm	

## DIMENSION

units:mm



DJ. 39BYG001