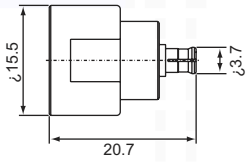
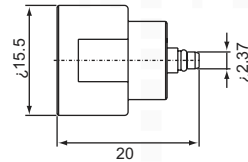


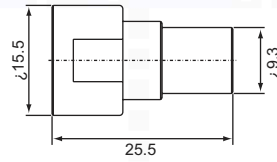
MODEL: YC30-1/YC40-1



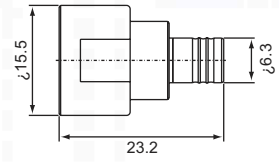
YC30-1 MCX1
YC40-1 MCX1
MCX MALE



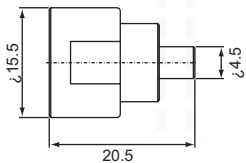
YC30-1 MMCX1
YC40-1 MMCX1
MMCX MALE



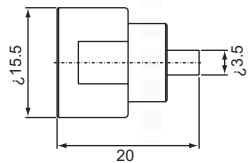
YC30-1 FME1
YC40-1 FME1
FME MALE



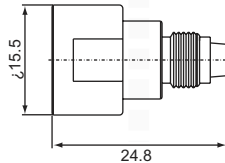
YC30-1 SMB1
YC40-1 SMB1
SMB MALE



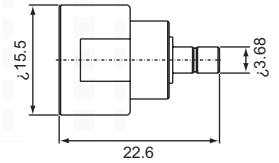
YC30-1 MCX2
YC40-1 MCX2
MCX FEMALE



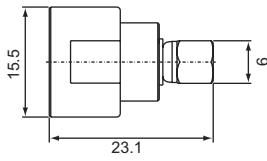
YC30-1 MMCX2
YC40-1 MMCX2
MMCX FEMALE



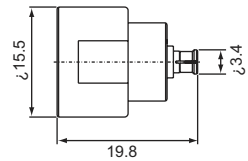
YC30-1 FME2
YC40-1 FME2
FME FEMALE



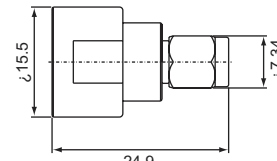
YC30-1 SMB2
YC40-1 SMB2
SMB FEMALE



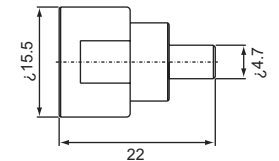
YC30-1 SMC1
YC40-1 SMC1
SMC MALE



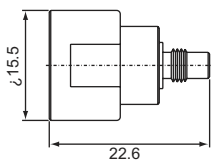
YC30-1 SMP1
YC40-1 SMP1
SMP MALE



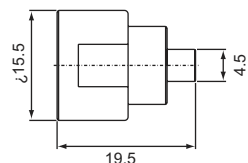
YC40-1 SSMA1
SSMA MALE



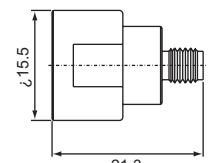
YC40-1 SSMB1
SSMB MALE



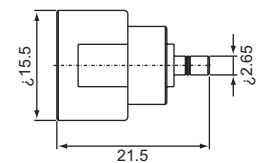
YC30-1 SMC2
YC40-1 SMC2
SMC FEMALE



YC30-1 SMP2
YC40-1 SMP2
SMP FEMALE



YC40-1 SSMA2
SSMA FEMALE



YC40-1 SSMB2
SSMB FEMALE

MODEL: YC30-1/YC40-1

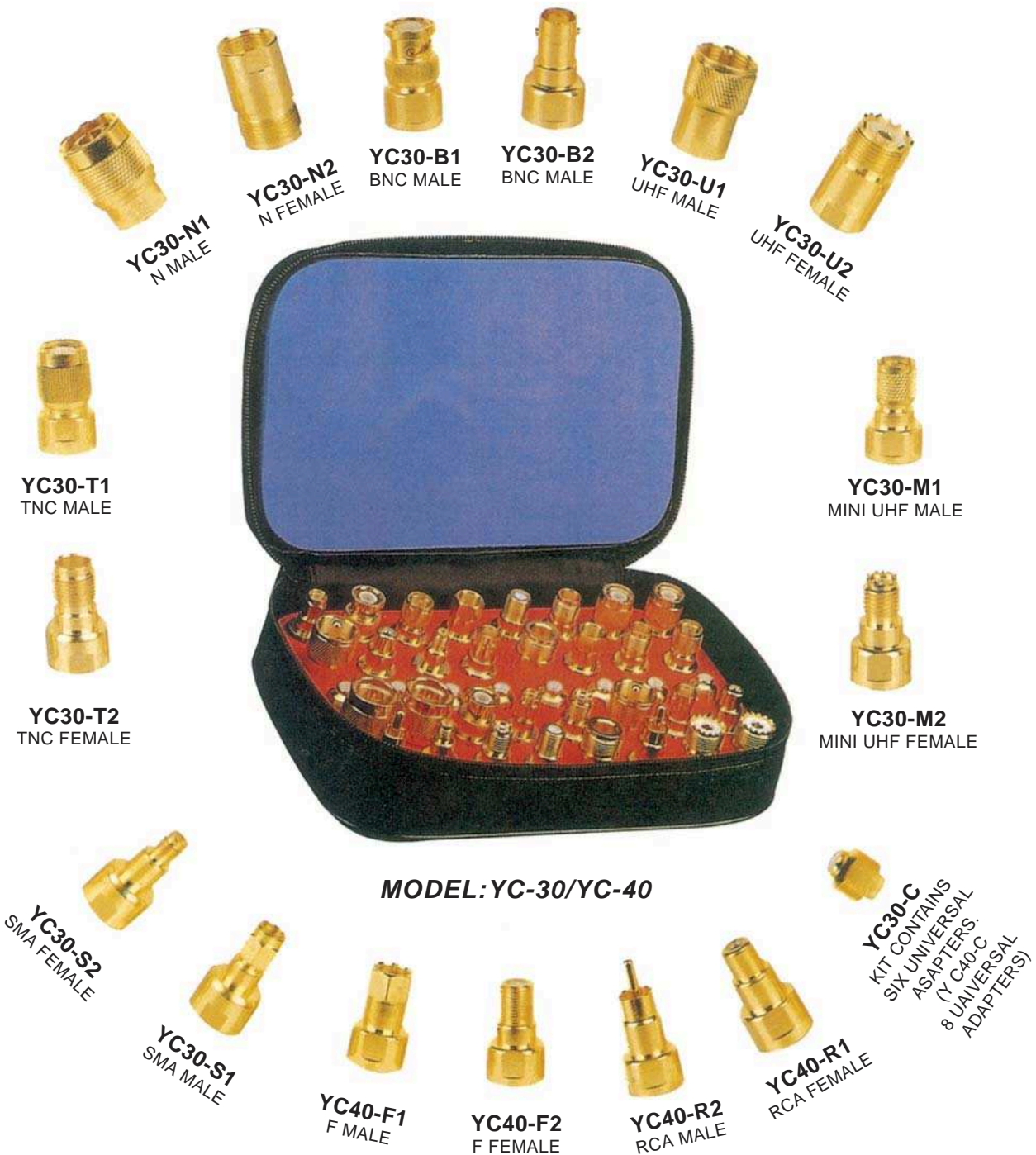
NOTE

YC30-1 is composed male and female of N, UHF, MINI UHF, SMA, BNC, TNC, MCX, MMCX, SMB, SMC, SMP, FME each and 6 universal adapters YC-C, total 30 pieces.

YC40-1 is composed male and female of N, UHF, MINI UHF, SMA, BNC, TNC, MCX, MMCX, SMB, SMC, SMP, FME, SSMA, SSMB each and 8 universal adapters YC-C, total 40 pieces.

Crate any inter - series you need!

- A necessary Uni - Adapter KIT for every techbician



- 1.Out ingenious adaper kit is the key to let you mix and two male or female coaxial fittings. You simply choose the two common connector ends you need, and screw them togerher with the universal adapter. It's so easy to build the perfect connector for the job-that's why technicians love it!
- 2.All uni-adapter sections are made of gold/siver plated machined brass with a gold plated center pin anchored in a trflon dielectric.
- 3.MODEL: YC-30/YC-40
There are thirty pieces in YC -30 and forty pieces in YC - 40. The difference is that there are F males/Females, RCA males9/Females and universal adapters each 2 picees additionally in YC-40